

Wondering what to plant, how to maintain them, or where to purchase plants?

Visit **Our Gardens, Classes, Events,** and **Resources** on our website to learn more about plants and pollinators.

*Gratitude to our volunteers!*

Oregon  
Community  
Foundation



Visit our Shop to Purchase Posters, Guides, Books, Seeds, Plants, and More

You Can Help!

- \* Make a tax-deductible donation!
- \* Take a class!
- \* Shop native plant sales!
- \* Create a pollinator garden!
- \* Become a Pollinater!
- \* Tell your friends!
- \* Follow us on social media!
- \* Wear our T-shirt!
- \* Sponsor a program or a garden!
- \* Add your garden to the Buzzway!
- \* Sign up for The Pollinator Times!



Visit our Native Pollinator Garden and take a self-guided tour with our Garden Guide!



Take a virtual tour! Visit Our Gardens on our website ~ See the garden's transformation ~ Watch videos ~ Learn about native plants and seeds and how they support pollinators, birds, and other wildlife.



312 N. Main Street, Suite B  
Phoenix OR 97535  
458-214-0508

[pollinator@pollinatorprojectroguevalley.org](mailto:pollinator@pollinatorprojectroguevalley.org)  
[pollinatorprojectroguevalley.org](http://pollinatorprojectroguevalley.org)

EIN 82-2110010



**Pollinator Project  
Rogue Valley**



People and plants together, supporting and increasing thriving pollinator populations everywhere.

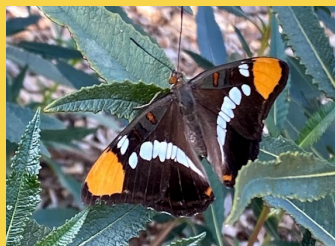
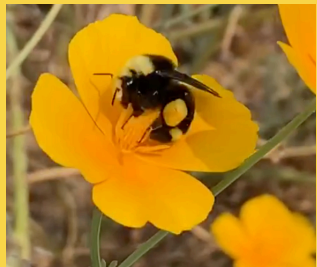
***Bee a Pollinator Protector!***

Thank you for helping our pollinators - bees, butterflies, moths, flies, wasps, beetles, and hummingbirds!

## Consider:

- ✿ With human development, natural habitat is disappearing. Urban gardens, especially those filled with native plants, are critical for the survival of pollinators, beneficial insects, and birds.
- ✿ Native bees (700 species in Oregon!) need our help more than the non-native European honey bee.
- ✿ 70% of native bees nest in the ground, so leave some bare soil and lightly maintained areas.
- ✿ Caterpillars eat the plants they evolved with, so it is critical to include native trees, shrubs, and grasses in your landscape plan. (Caterpillars are the best food for baby birds!)
- ✿ Leave the leaves and wait until spring to clean up your garden to provide shelter for insects and birds.

Visit **Resources** on our website to learn more!



*The more we know about the native pollinators and plants that are in fact essential components for our Southern Oregon ecosystem, the easier it will be for human society to make decisions that will benefit us now and into the future.*

## Habitat Academy

We offer regular and ongoing classes, workshops, and citizen science projects to adults, focused on native plants, seeds, gardens, pollinators, and more!

## Pollinator Pals

We connect with youth in schools and other educational community venues with creative lesson plans, curriculums, outdoor activities, and more!  
Gratitude to our funders!



## From Fire to Flowers Pollinator Gardens

We help people plant pollinator gardens, full of native plants, to bring back the pollinators after the fire. Gratitude to our funders and partners!



[PollinatorProjectRogueValley.org](http://PollinatorProjectRogueValley.org)

## Rogue Buzzway

Pollinators need lots of habitat - trees, shrubs, and flowering plants that bloom all year long and provide food and habitat and nesting sites for butterflies, moths, and beetles - **three small gardens in close proximity make one large garden!** Invite your neighbors to join you in creating a Buzzway corridor!

Help us put more pollinator landscapes on our Rogue Buzzway map! Visit our website to submit your information.

An internship project with **SO Southern OREGON UNIVERSITY**

*Bee Native!  
Oregon is home to 3,600 species of native plants - trees, shrubs, flowering plants, grasses, and bulbs.*

Pesticides, even herbicides, kill good insects like bees, spiders, and other beneficials. Avoid commonly available insecticides that contain systemic neonicotinoids!  
Learn more on our website.

